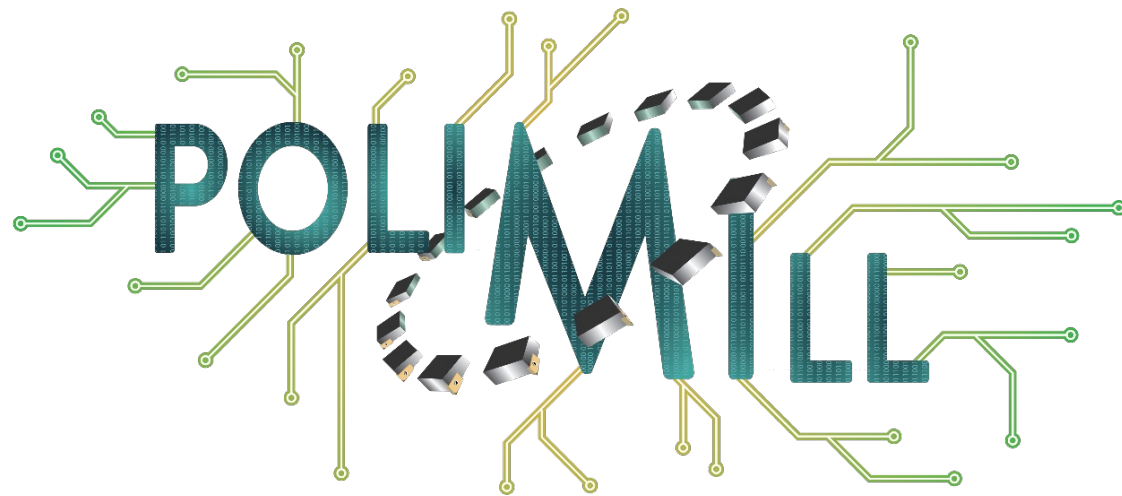
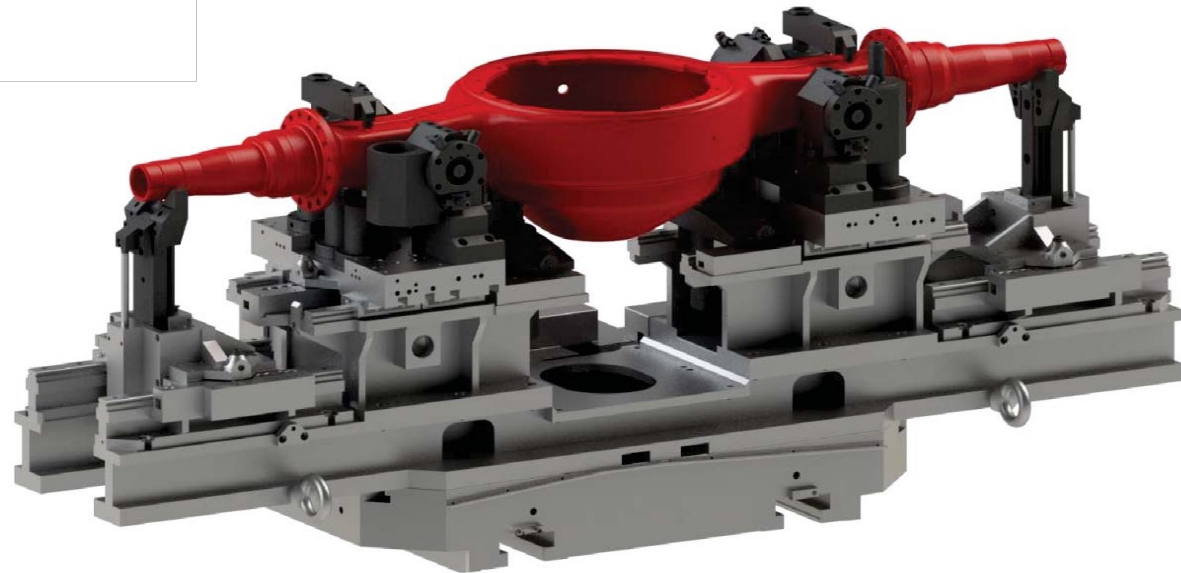
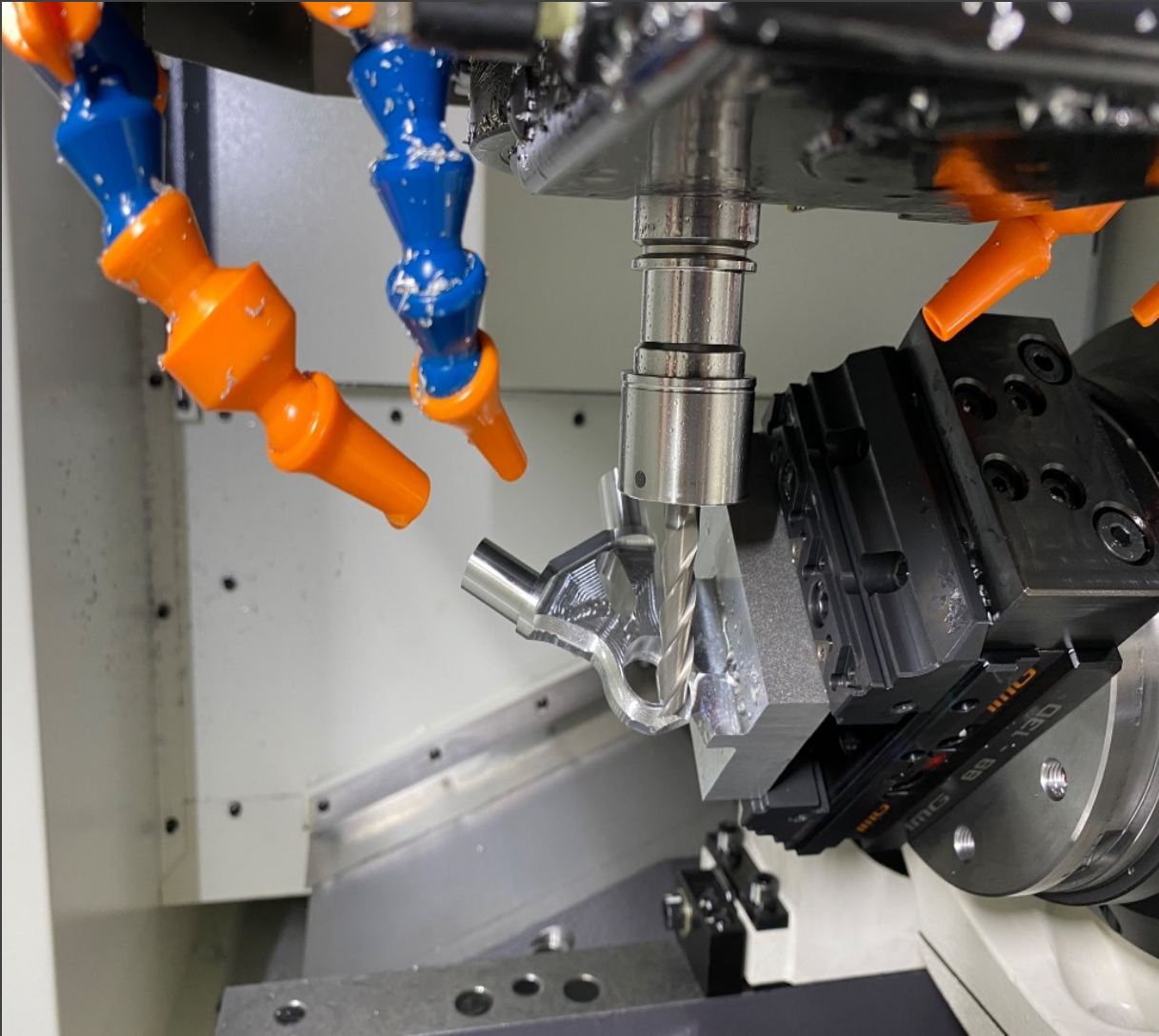


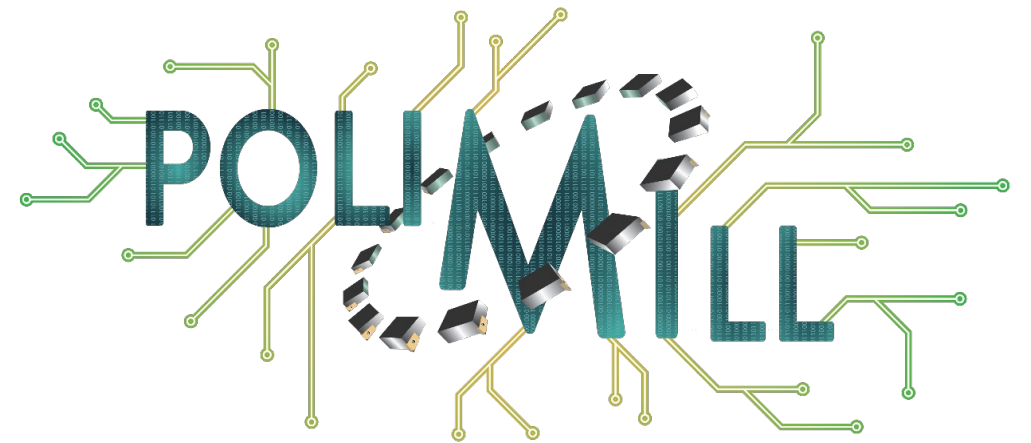
L'IMPORTANZA
DELLA PRESA
PEZZO NEL
CICLO DI
LAVORO





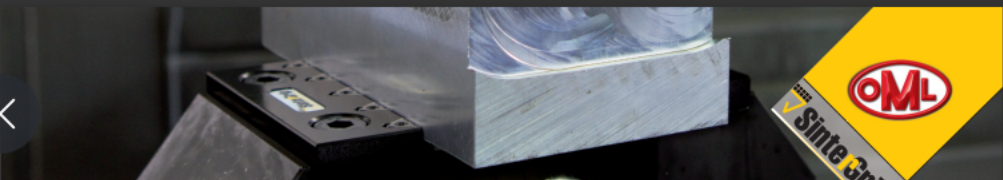


VIDEO IMG



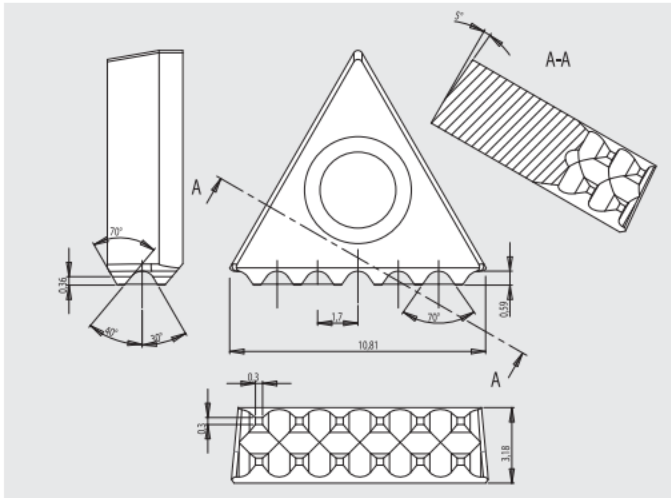
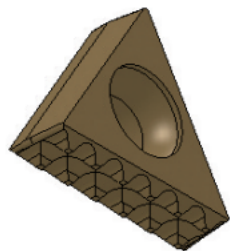


 **SinterGrip**

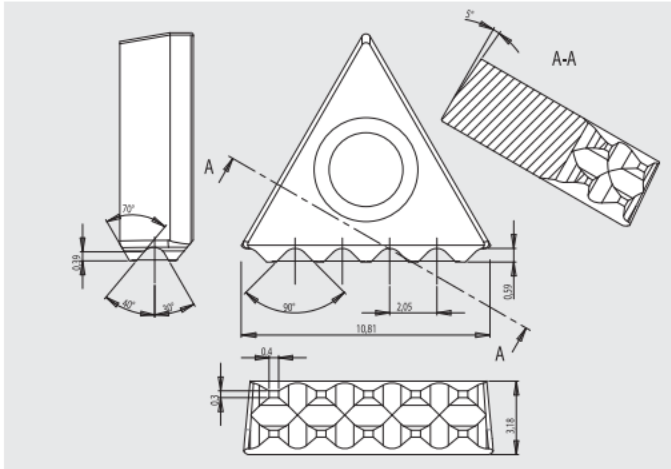
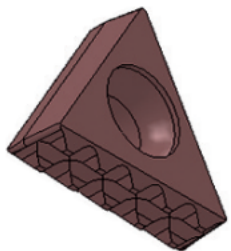


Caratteristiche Tecniche • Caractéristiques techniques

inserti **SinterGrip** per acciaio (STD) - plaquette **SinterGrip** pour acier (STD)

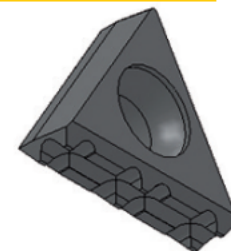
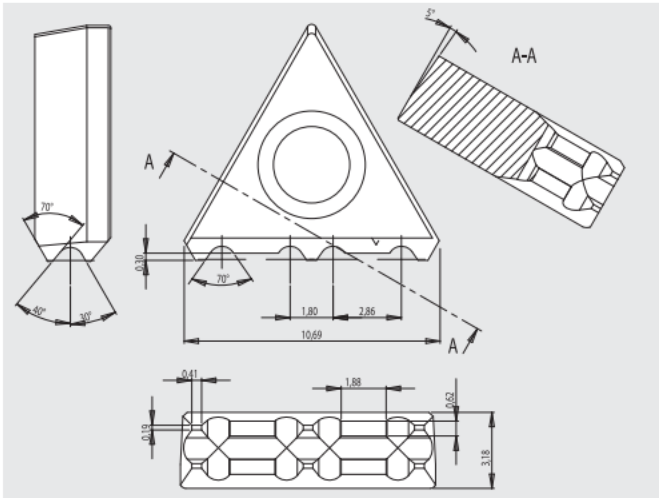


inserti **SinterGrip** per acciaio temperato / titanio (sino a 50-54 HRC) - plaquette **SinterGrip** pour matériaux durs (jusqu'à 50-54 HRC)

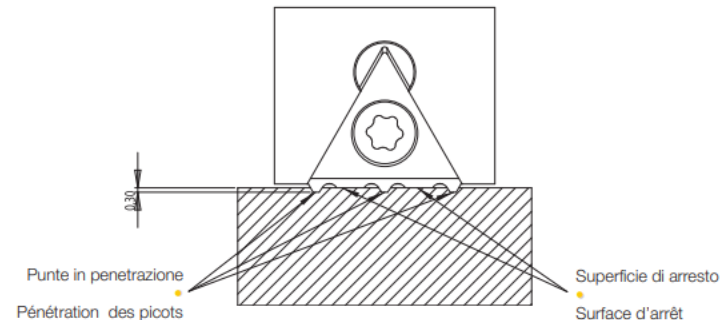


Caratteristiche Tecniche • Caractéristiques techniques

inserti **SinterGrip** per alluminio (ALU) - plaquette **SinterGrip** pour aluminium (ALU)



incisione alluminio • Bridage aluminium



VIDEO
SINTERGRIP



SinterGrip

